



The ASME Sabine Section

Newsletter



ASME SABINE SECTION

SEPTEMBER 2008

ASME Sabine Section ONLINE!

This newsletter and other Sabine Section items of interest can be viewed from the web site online at the URL:

<http://www.sections.asme.org/sabine/>

September meeting. Details of the meeting are presented below.

Chair	Patrick Berken
Vice Chair	Roy Breaux
Treasurer	Mark Reynolds
Secretary	David Haby

INSIDE THIS ISSUE	
1	LOCAL NEWS SUMMARY
2	INTERNATIONAL NEWS
3	MEETING INFORMATION
4	SPONSORS

INTERNATIONAL NEWS

- NO NEWS THIS MONTH

- SOUTH TEXAS SECTION-- MEETINGS

Due to the proximity of Houston and the large number of ASME activities hosted there, a meetings link is provided.

<http://www.asmesouthtexas.org/meetings.php>.

LOCAL NEWS SUMMARY

- Entergy Sabine Power Station Tour

On Thursday, September 18, 5:30 PM the Sabine Section will hold the

MEETING INFORMATION

September Meeting

What: ASME Sabine Section - September General Meeting

Topic: Plant tour of the Entergy Sabine Power Generating Plant located in Bridge City, Texas.

When: Thursday, September 18, 2008



Time: Arrive at 5:30 pm at the main gate. Entergy will escort us to their assembly hall located adjacent to the front gate.

PDH: Two Professional Development Hours (PDH) will be awarded for this meeting.

Where: Bridge City, FM 1442 (Round Bunch Road) approximately 2 miles west of Bridge City. (Phone number in case you get lost 409-790-5987 or 409-790-5989)

PPE Required: Hard hat, safety glasses, ear plugs, and closed toe leather shoes. No tennis shoes or shorts. Nomex is not required. Limited supplies of hard hat, safety glasses, ear plugs will be available at the site.

RSVP: ASME needs to provide Entergy with an approximate headcount for the tour. Please call David Haby at 409-757-2113 or email David at David.S.Haby@ExxonMobil.com with your **RSVP by Monday, September 15, 2008.**



The Entergy Sabine Plant located in Bridge City, Texas has been an OSHA VPP Star plant since August, 2005. A plant milestone of five years with no lost-time accidents will be reached on December 17th, 2008.

The plant consists of 5 generating units producing approximately 1900 megawatts of power, or enough power for approximately 1.9 million homes. Sabine has been in operation since 1962 and is owned and operated by Entergy Corporation. The first unit was brought on line in 1962 and the last unit was brought on line in 1979. All the boilers are fired by natural gas. As a secondary fuel they can be fired on number 2 fuel oil. The boilers are manufactured by Combustion Engineering and the turbines were manufactured by Westinghouse.

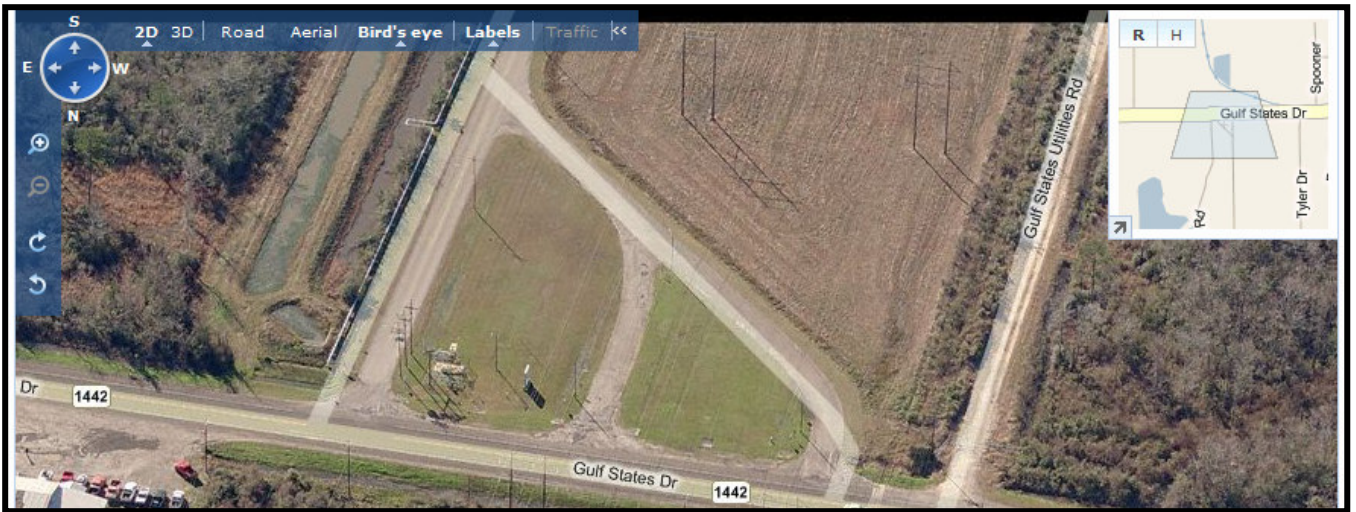
Entergy Corporation is an integrated energy company engaged primarily in electric power production and retail distribution operations. Entergy owns and operates power plants with approximately 30,000 megawatts of electric

generating capacity, and it is the second-largest nuclear generator in the United States.

Entergy delivers electricity to 2.7 million utility customers in Arkansas, Louisiana, Mississippi and Texas. Entergy has annual revenues of more than \$11 billion and approximately 14,300 employees Entergy is a Fortune 500 company with revenues of more than \$11 billion in 2007.

In 2007, Entergy was named to the *Forbes* list of America's Most Trustworthy Companies for its corporate governance practices and accounting transparency. Entergy was the only electric utility to make the list, which was drawn from 8,000 public companies

Headquartered in Beaumont, Entergy Texas, Inc. provides electric service to approximately 393,600 customers in Southeast Texas. The company's service area encompasses [26 counties](#), extending from Newton, Orange and Jefferson counties along the Texas-Louisiana border, south to Chambers County near the Gulf of Mexico, west to Burleson County and north to Robertson and Trinity counties. Entergy Texas employs approximately 500 people and is headed by [Joe Domino](#), who serves as president and chief executive officer.



Sabine Generating Plant:



SPONSORS

Don't forget to visit our sponsors on the Sabine Section Web Page. ASME Sabine Section is now online! The newsletter reaches engineers in the Golden Triangle area, and countless others over the Internet. Make your business noticed by all these professionals through sponsoring the ASME Sabine Section. For sponsoring information or for comments to the web site/newsletter editor, please contact Gene

Martinez at mailto:gene_martinez@msn.com. Current sponsors are BEAUMONT MACHINE WORKS, CDI ENGINEERING, EAGLE PRO ENGINEERING, FABRICON INTERNATIONAL, ENGLOBAL, RAS Process Equipment, TYCO Valves, FLOWSERVE, CARTER CHAMBERS, STANDARD ALLOYS, GRESON SALES, PUFFER.SWEIVEN, HATFIELD AND COMPANY and ADVANCED RUPTURE DISK. Sponsors, thank you for your support!