



# The ASME Sabine Section

## Newsletter



ASME SABINE SECTION

SEPTEMBER 2006

### ASME Sabine Section ONLINE!

This newsletter and other Sabine Section items of interest can be viewed from the web site online at the **URL**:

<http://www.sections.asme.org/sabine/>

INSIDE THIS ISSUE	
1	LOCAL NEWS
2	INTERNATIONAL NEWS
3	CHAIR'S CORNER
4	SPONSORS

### LOCAL NEWS

#### o TOUR Drainage District Seven Alligator Bayou Pumping Station

562,500 gallons per minute (gpm) with one pump! 2,250,000 gpm with 4 running in parallel. Each pump driven by a 12 cylinder diesel engine with 2,332 horsepower. Any guess on the size of the inlet lines? If a tanker truck holds 7,000 gallons, one pump could fill 80 trucks a minute. It's not every day you can stand next to an impeller that's 12 feet in diameter.

ASME has a special tour planned for Thursday, September 21, 2006, at 5:30 PM, approximately one year after hurricane Rita. The tour is of the Drainage District Seven alligator bayou

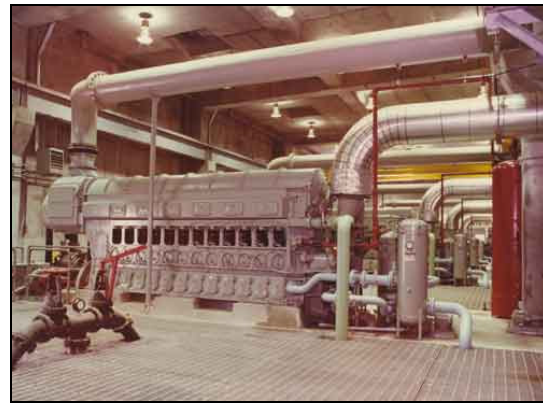
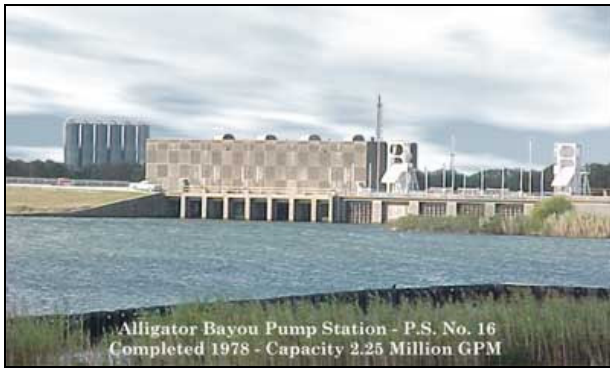
pumping station. This pumping station is located on the storm levee in South Jefferson County. Its purpose, along with others, is to remove rain and storm water collected within the levee system in South Jefferson County.

Phil Kelley, Asst. General Manager, Jefferson County Drainage District No. 7, will graciously open the doors of this massive pumping station allowing ASME members, guests, and Lamar University ASME students, the opportunity to learn of its capability. A special bonus is possible. If the water level is high enough, requiring pumping that day, Phil offered to start one of the massive pumps for us to witness.

Those of you needing professional development hours for your PE license, take note. One professional development hour (PDH) will be offered for this tour. Please plan to attend. Hard hat, ear plugs, safety glasses, and closed toed shoes are required for the tour. Please bring your PPE. Limited quantities of PPE are available at the site.

Please RSVP to the following if you plan to attend:  
David Haby at 409-757-3708 or email to <mailto:David.S.Haby@ExxonMobil.com>





Jefferson County Drainage District No. 7 (DD7) is one of three Drainage Districts located within Jefferson County, Texas. DD7 was established as a political subdivision of the State of Texas in 1946 and serves the drainage needs of South Jefferson County.

The District covers an area of 107.42 square miles and encompasses the cities of Port Arthur, Groves, Nederland and Port Neches and unincorporated areas of Jefferson County. Two thirds of the District is below five (5) feet above sea level. Sixty (60) to Seventy (70) percent of the District drains to Taylor's Bayou. Rainfall for this area averages 53 inches per year.

At present 275 miles of concrete and earthen outfall ditches, 36 miles of levee and seawalls, and 19 Pump Stations serve the District with a combined pumping capacity of 8.0 million gallons per minute.

Below are directions to the facility. Looking forward to seeing you there:

Beginning at the intersection of highway 69 and 73 in Port Arthur, travel West on Highway 73 towards Winnie. Travel approximately 5 miles. Approximately 1/4 mile past the intersection with West Port Arthur road (Spur 93) turn left on Cambridge Road off of highway 73. Travel down Cambridge, enter the gate, and up on the levee. On top of the levee turn left. Travel on top of the levee approximately 3 miles to the pumping station. See map below.



○ **SCHOLARSHIP FUNDS TRANSFERRED TO LU FOUNDATION**

The Ernest Holdredge Memorial Scholarship and the Otto Brown Memorial Scholarship have been set up as perpetual endowments with the Lamar University Foundation. The university will now manage the funds and administer the scholarships, as per agreements with Sabine Section, for recipients who are worthy mechanical engineering juniors to use for their senior year studies.

Holdredge was the first ME Department Head at Lamar. The Lamar Student Section and the Sabine Section acted jointly to honor his Lamar and ASME contributions. An award has been granted each year in his honor to an ME Junior since shortly after his death in 1958.

Brown, the third ME Department Head at Lamar, was similarly honored by both student and professional ASME members after his retirement. A Brown Scholarship has been awarded to an ME Junior each year since 1987. He died in December of 1988.

The LU Foundation has a good earnings record for endowment funds to generate both scholarship funding and growth. Additionally, alumni may designate their funds to specific endowments; or anyone may become an educational donor to specific scholarship funds. The Sabine Section will continue to support and participate in the scholarship activities.

○ **THANKS TO OUR SPONSORS**

Our sponsors are listed at the end of our newsletters. Ads and links are on our web site. It is through these sponsorships that we have been able to grant support to the Lamar Student Section ASME activities and scholarships.

We welcome these new sponsors since our last newsletter: Standard Alloys, Greson Sales, and Professional Outlook.

Please examine the sponsors' page on our website and check out their links. Mention and support our sponsors when appropriate. Let them know we appreciate their support of our activities.

Chair	Walter Almon
Vice Chair	Steve Seal
Treasurer	Mark Reynolds
Secretary	Madhu Panchal

**INTERNATIONAL NEWS**

- **Excerpts from the President: UNITED BY A COMMON VISION**—(feature from ASME News Online <http://www.asmenews.org/columns/frompres.html>)

Regardless of which part of ASME we relate to most, it is important to realize that common values really do unite us. We must recognize and appreciate the values of integrity and ethical conduct. All of us in ASME share a desire to

embrace diversity and to respect the dignity and culture of all people. We share a common responsibility to nurture and treasure the environment and our natural and human-made resources. We also share a common desire to facilitate the development, dissemination, and application of engineering knowledge. We share a universal need to promote the benefits of continuing education and of engineering education. We are unified in our desire to respect and document engineering history while, at the same time, embracing change.

It goes without saying that we continue to face the challenges associated with a changing workplace environment, and the changing needs of those we serve. The need to embrace change in an effective way is an important challenge that unites us.

Perhaps the single most important uniting factor for ASME is that it is a

place to have fun and experience good times with people who share our hopes and aspirations. Whether you are volunteer or staff, early career engineer or seasoned professional, active locally or globally — the real ASME looks like people! It looks like people having fun while doing things that are worthwhile! The real ASME continues to need each of us to be successful in the days ahead.

— *Terry Shoup*  
*ASME President 2006–2007*

- **SOUTH TEXAS SECTION--  
MEETINGS**

Due to the proximity of Houston and the large number of ASME activities hosted there, a meetings link is provided.

<http://www.asmesouthtexas.org/meetings.php>.

## **THE CHAIR'S CORNER**

---

### *Outlook for 2006-07 ASME Year*

As of this writing, 2006 is proceeding well with our Sabine Section. We had a good program on metals and materials in January, on February 16, a tour of Saladin Pumps, and March 16, a lecture from a Authorized Inspector on ASME pressure vessels – Code requirements. The annual Honors & Awards banquet was a good one in April. Our September meeting on the 21<sup>st</sup> will be a tour of the Drainage District 7 pump systems.

We continue with our goals to focus on informative subjects of interest to members, and student members. We also want to emphasize training courses that count towards continuing education for professional engineers. One such course will be on ethics, a requirement for Texas license renewal. We hope to put on this course before the end of the year.

---



Regarding our two scholarships, Holdredge and Brown, we have moved those funds from our section's management into the Lamar Foundation. This is an improvement, because with the Lamar Foundation, the funds will be well managed, continue to grow, and scholarships will continue to be given to deserving junior-level mechanical engineering students. As this is an educational fund, any contributions to it are tax-deductible. And, the Lamar Foundation always gratefully accepts any contribution to aspiring mechanical engineering students. To make a donation, please call Janice Trammell of the Lamar Foundation at 409-880-8422.

The outlook for Southeast Texas looks bright. Several oil refineries and chemical plants are announcing, or soon will announce, expansions. Also, three Liquefied Natural Gas (LNG) plants are in the process of being designed and built. Cheniere is building one on the Louisiana side of the Sabine River. ExxonMobil has awarded their contract to CB&I for their LNG in Port Arthur. Sempra also plans to build in Port Arthur. This will help the economy of Southeast Texas, and help ease the nationwide shortage of natural gas. Motiva will expand its refinery by \$4 billion. Other facilities are expanding. It is estimated that upwards of \$13 billion (yes, billion) of new construction will come to Southeast Texas over the next several years. In all the above expansions, mechanical engineers will have many roles to play!

Regarding our meetings, come join us! Our general meetings are typically the third Thursday of the month. Our executive meetings are usually the first Monday of the month at 5:30. Please contact me if you would like to attend. We welcome your participation!

Walter S. Almon, P.E.  
Chair  
727-9129

## **SPONSORS**

Don't forget to visit our sponsors on the Sabine Section Web Page. ASME Sabine Section is now online! The newsletter reaches engineers in the Golden Triangle area, and countless others over the Internet. Make your business noticed by all these professionals through sponsoring the ASME Sabine Section. For sponsoring information or for comments to the web site/newsletter editor, please contact Gene Martinez at [mailto:gene\\_martinez@msn.com](mailto:gene_martinez@msn.com). Current sponsors are BEAUMONT MACHINE WORKS, CDI ENGINEERING, EAGLE PRO ENGINEERING, FABRICON INTERNATIONAL, ENGLOBAL, SCALLON CONTROLS, RAS Process Equipment, ALSTON Equipment, TYCO Valves, FLOWSERVE, CARTER CHAMBERS, STANDARD ALLOYS, GRESON SALES and PROFESSIONAL OUTLOOK. Sponsors, thank you for your support!

